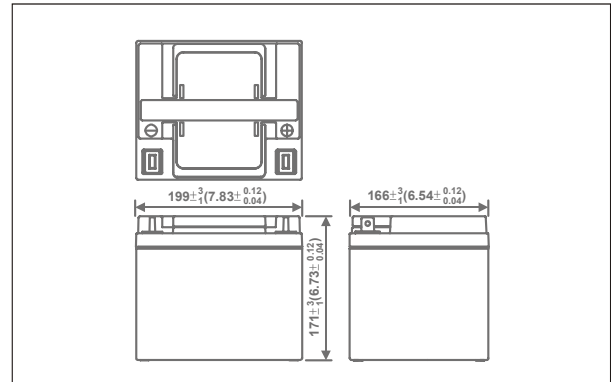


## Sealed Gel Rechargeable Battery Product Specification

### SLAUMXNPG45-12 (12V45AH)



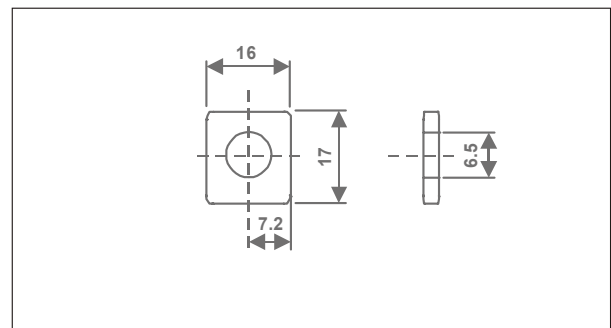
#### Outer dimensions (mm)



#### Specifications

Nominal Voltage		12V
Rated capacity (20 hour rate)		45Ah
Dimensions	Total Height	171 mm(6.73 inches)
	Height	171 mm(6.73 inches)
	Length	199 mm(7.83 inches)
	Width	166 mm(6.54 inches)
Weight Approx		15.0 Kg (33.0 lbs)

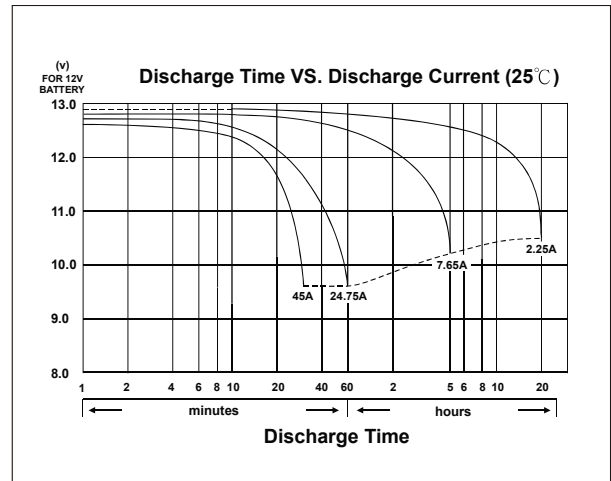
#### Terminal Type (mm)



#### Characteristics

Capacity 25°C(77°F)	20 hour rate(2.25 A)	45.0 AH
	10 hour rate(4.30 A)	43.0AH
	5 hour rate(7.65 A)	38.3AH
	1 hour rate(24.8 A)	24.8AH
	1.5 hour discharge to 10.5V	18.0 A
Internal Resistance	Full charged Battery at 25°C(77°F)	6 mΩ
Capacity affected by Temperature (20 hour rate)	40°C(104°F)	102%
	25°C(77°F)	100%
	0°C(32°F)	85%
	-15°C(5°F)	65%
Self-Discharge at 25°C(77°F)	Capacity after 1 month storage	92%
	Capacity after 3 month storage	90%
	Capacity after 6 month storage	80%
Terminal		T4
Charge (constant Voltage)	Cycle	Maximum Charging Current 13.5 A Voltage 13.80-14.40V
	Float	Voltage 13.50-13.80V

#### Discharge Curves 25°C(77°F)



Time	5 Min	10 Min	15 Min	30 Min	1hr	2Hr	3Hr	4Hr	5Hr	10Hr	20Hr	
9.60V	A	178	114	82.6	45.8	26.7	14.5	11.4	9.1	7.9	4.65	2.45
	W	1794	1254	924	510	312	172.8	136.8	109.2	95.4	55.98	29.52
10.20V	A	158	105	79.1	43.6	26	14	11	8.85	7.68	4.51	2.37
	W	1638	1170	894	490.2	298.2	165	130.8	106.2	92.4	54.42	28.68
10.50V	A	144	96.1	74.6	41.1	25.4	13.6	10.7	8.64	7.5	4.39	2.31
	W	1524	1080	852	469.2	286.8	157.8	126	103.2	90.6	53.16	28.02
10.80V	A	122	83.4	67.7	37.3	24.5	13.1	10.2	8.35	7.25	4.24	2.23
	W	1326	942	780	429	273	148.8	118.8	99	87.6	51.36	27.06
11.10V	A	90.4	65.8	57.5	31.7	23.1	12.3	9.48	7.87	6.83	4.02	2.11
	W	1020	750	672	372	250.8	136.2	109.8	94.2	82.2	48.42	25.5