

## FREQUENT QUESTIONS

### My battery doesn't last for the entire golf game.

You need to check that the battery is fully charged, until you get a green light on the charger. If the problem persists please contact us.

### My battery stops working during a golf game.

All the batteries have a battery management system (BMS) in order to protect them and to extend their lifespan. The BMS can be clocked by excessive recharges or low voltages on the battery. This usually happens if you play more holes than the ones the battery is designed for. Recharge the battery and start playing your game normally.

### My charger turns on and off while charging.

The charger is designed to synchronize with its battery. It is normal that the charger light goes on and off during the initial recharges. If this continues to happen for a long period of time, please contact us.

### My battery is not charging.

This can happen if you try to charge the battery within parameters lower than acceptable. This can happen if you try to charge the battery after a long period of time. Never ever store a fully discharged battery.

### How to safely dispose a lithium battery?

We at Ultra Max do our best to protect the environment. The lithium batteries can be dropped at a registered recycling centre or alternatively, you can just send these back to us for recycling.

Types	16 holes	22 holes
Construction	LifePO4 ( phosphate ion )	
Size	168mm x 128mm x 75mm	168mm x 128mm x 105mm
Weight	2.1 Kg	3.2 Kg
Capacity	16 Ah	22 Ah
Nominal Voltage	12 v Nominal	
Service life	5 times longer than lead acid	
Warranty	Warranty 3-year limited warranty*	
Charger	High-tech charger (1-year limited warranty)	
Charging times	Less than 4.5 h	Less than 5 h
Address	Address steering system cell	
Anderson battery connector connection	Tbar	
Accessories bag	Includes neoprene	

Ultra Max Batteries, London, N18 2NG  
[www.ultramxbatteries.com](http://www.ultramxbatteries.com)  
[www.ultramax.co.uk](http://www.ultramax.co.uk)

# ULTRA MAX®

LifePO4 ( phosphate ion )

## Instructions for use



Many thanks for choosing Ultra Max Lithium 4.0. It is important to make sure that you select the right battery for you, depending on the frequency you play and on the duration of your usual games.

The lithium batteries are highly reliable due their top quality components, and now they also have a 3 year limited warranty.

The lithium batteries are compatible with nearly all brands and models of electric gold caddies. Their incredible lightweight will increase the performance of you gold caddy, less than 1/4 of the weight and less than 1/3 of the size compared to a traditional SLA battery. Unlike these ones which can only use around 40% of their total capacity, a lithium battery can use up to 90% of its total power.

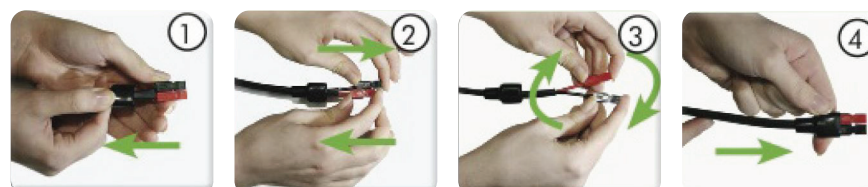
UltraMax lithium are supplied completely protected by a sophisticated battery management system, which is continuously monitoring all the cells in order to make sure that both the performance and the lifespan of the battery are always optimized.

Ultra Max batteries are supplied with an integral interconnections "T-Bar" or interconnection connector. If your golf caddy requires a Torberry battery connector you can easily convert it by mounting the Torberry connector directly on the battery screw terminals, or using a Torberry T-Bar adapter in the interconnection box. You can also use any other type of connector on the battery screw terminals, in case you have got any unusual accessory.

In the case you use an Anderson/Torberry cable, it is important to make sure that both red and black connections are connected to the charger.



In order to be compatible the plugs can be adjusted easily this way:  
 1 – Slide back the red and black wires rubber cover  
 2 – Slide the red and black cables in the opposite direction  
 3 – Once separated, switch the plugs positions and slide these back together  
 4 – Put the plastic cover back



### Charging instructions:

Due to the unique design of the battery you shouldn't remove the cover. Please make sure you read the previous advices before charging your battery for the first time.

- 1 – Connect the charger to the battery using the side plug
- 2 – Connect the charger to a mains supply
- 3 – Press the switch on the back of the charger
- 4 – The charging process will start

- LED 1 ● RED – Discharged battery  
 LED 2 ● RED/YELLOW – Battery charging  
 LED 3 ● GREEN – Battery fully charged

- 5 – After finishing the charging process, it is recommended to disconnect the charger from both the mains supply and the battery.